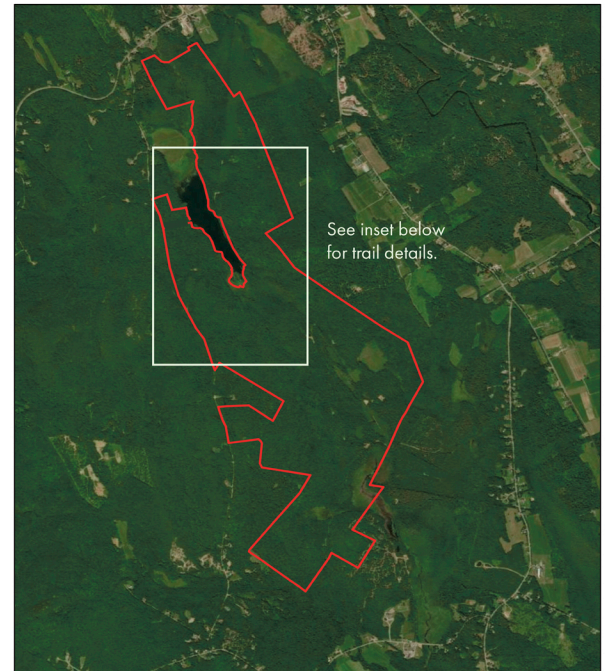




Virgil Parris Forest Trails

Sodom Road, Buckfield, ME 04220

- Access to the boat launch is from the unnamed dirt trail off John Ellingswood Road near the Buckfield Town garage. When the gate is open, access may be made by private vehicle.
- Parking at the boat launch is not permitted. Use the pull off area just to the north of the launch area. This dirt trail is owned by the Town of Buckfield. ATVs are permitted on this trail but are not permitted on property owned by WFLT. Use caution when navigating this trail.
- There is no through access south of the South Pond gate.
- Preserve boundary is shown to the right. All recreational trails are located near South Pond.
- Access to the Lowell Trail is on the east side of the road. Improved trail signage is planned for 2025.



Preserve Etiquette

- No overnight parking or camping
- Be safety conscious; use trails at your own risk.
- No unauthorized motorized vehicles.
- Stay on existing trails.
- Dogs on a leash / voice command at all times.
- Respect wildlife, observe from a distance.
- Preserve closes at dusk.
- Carry in, carry out.
- **NO FIRES PERMITTED**

User Information

- Hikers wear blaze orange during hunting season.
- Dog walkers, please clean up after your dogs.
- Nordic skiers are welcome. Trails not groomed.
- Snowshoers are welcome.
- Snowmobilers allowed on designated trails.
- Hunters are welcome. Please contact the Trust at 207-739-2124.
- Fishermen are welcome.
- Horseback riders allowed. Please stay on trails.

